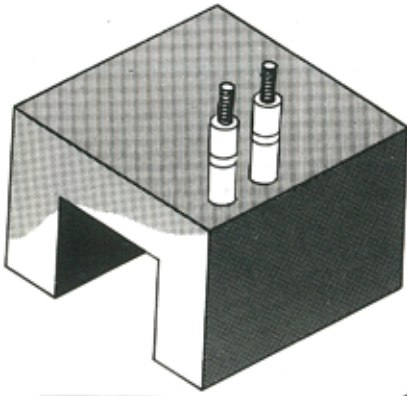


CAST-IN HEATERS



CAST-IN HEATERS

Tubular Heaters can be cast in aluminium, bronze, brass or iron to give a unit of long life, consistent product quality and versatility in design.

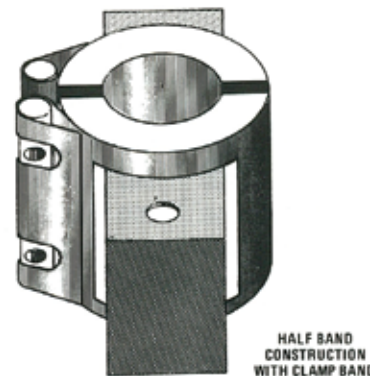
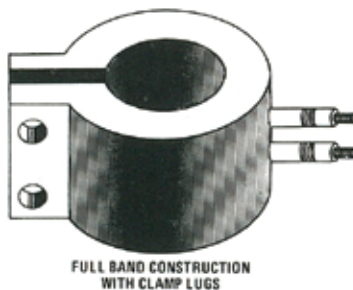
The mass of metal surrounding the cast-in heater provides a 'Heat-Sink' of excellent thermal conductivity. This results in high wattage capability with overall low watt-density, prolonged heater life, uniform heat transfer, stable and high temperatures that can be precisely controlled and increased resistance to thermal and mechanical shock.

VERSATILITY

These units are used extensively on machinery that operate almost non-stop e.g. Extruders, injection moulders, heater sealers, hot plates, platens, dies roller heating etc., because of their durability and maintenance free life.

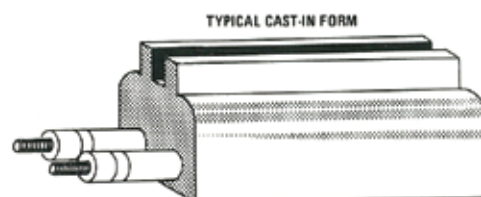
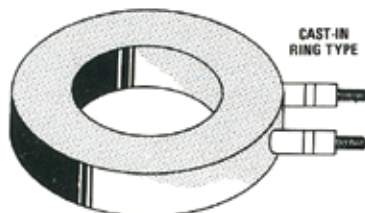
CAST-IN BANDS

The cast-in aluminium band heater consists of metal sheathed mineral insulated tubular element, formed to shape and cast into Aluminium using a pattern of required dimensions with allowances for machining. The bore is then machined to give a perfect fit between the heater and the heated part. Normally used on Plastic Extruders, injection and blow moulding machines, these elements have many advantages. They are robust, give even heat distribution, and allow higher wattage concentrations. Cooling coils and or fins can be incorporated in the unit.



CAST-IN RINGS, BARS AND PLATES

Offer greater versatility in design, minimum machining on unusual shaped applications. e.g. Hotplates, Sealing Bars etc.



CAST-IN OVER THE SIDE IMMERSION

Good heat transfer and large heat outputs into such metals as solder, lead, tin and stereotype metal pots etc. Hotco technicians are available to discuss whether cast-in heaters are more suited to your application than conventional types of heaters.